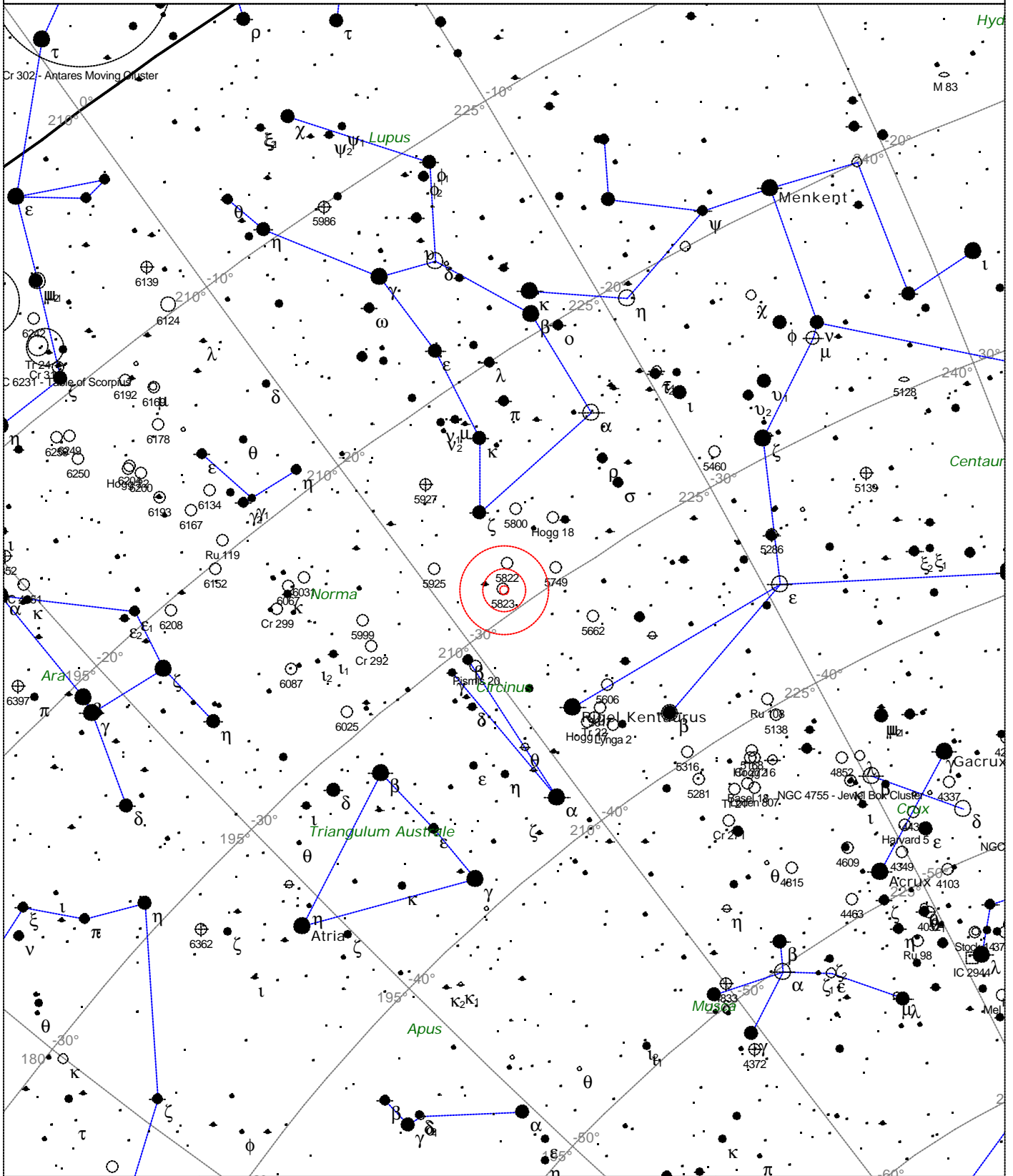


# Caldwell 88 - NGC 5823



<p><b>STARS</b></p> <ul style="list-style-type: none"> <li>● &lt;3</li> <li>● 3.5</li> <li>● 4</li> <li>● 4.5</li> <li>● 5</li> <li>● 5.5</li> <li>● 6</li> <li>● 6.5</li> <li>● &gt;7</li> </ul>	<p><b>SYMBOLS</b></p> <ul style="list-style-type: none"> <li>● Multiple star</li> <li>○ Variable star</li> <li>☾ Comet</li> <li>☾ Galaxy</li> <li>□ Bright nebula</li> <li>□ Dark nebula</li> <li>⊕ Globular cluster</li> <li>○ Open cluster</li> <li>⊕ Planetary nebula</li> <li>⊗ Quasar</li> <li>△ Radio source</li> <li>× X-ray source</li> <li>○ Other object</li> </ul>	<p>Caldwell 88 - NGC 5823                  Type of object: Open cluster                  Magnitude: 7.0                  Size: 12.0'                  Right ascension: 15h 5m 40s                  Declination: -55° 36' 57"                  Constellation: Circinus</p>
---	---	---

Local Time: 19:40:11 12-Sep-2002      UTC: 19:40:11 12-Sep-2002      Sidereal Time: 18:56:39  
 Location: 53° 27' 0" N 2° 31' 0" W      RA: 15h05m40s Dec: -55° 36' Field: 45.0°      Julian Day: 2452530.3196