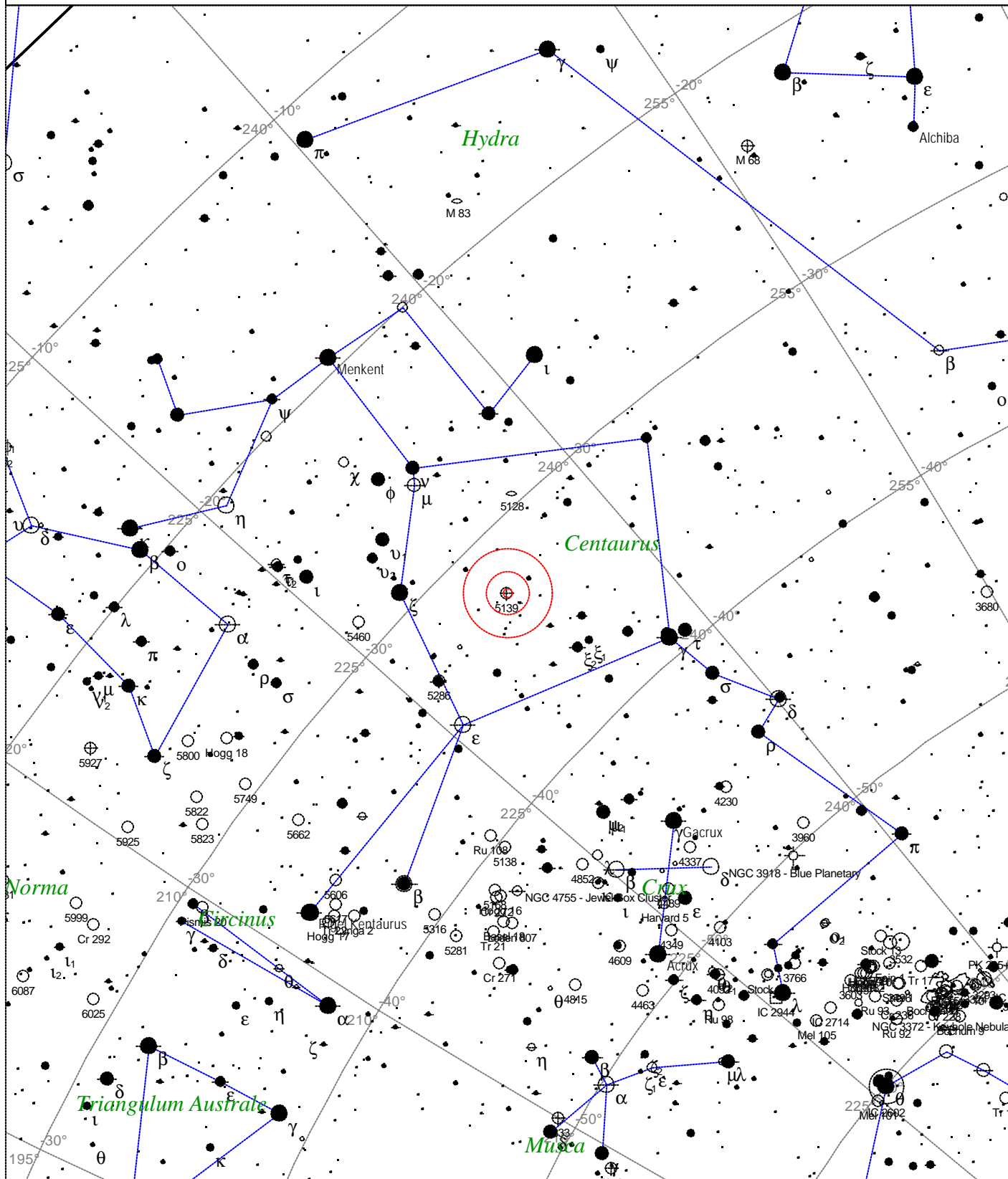


Caldwell 80 - NGC 5139



<p>STARS</p> <ul style="list-style-type: none"> ● <3 ● 3.5 ● 4 ● 4.5 ● 5 ● 5.5 ● 6 ● 6.5 ● >7 	<p>SYMBOLS</p> <ul style="list-style-type: none"> ● Multiple star ○ Variable star ☄ Comet ☐ Galaxy ☐ Bright nebula ☐ Dark nebula ⊕ Globular cluster ○ Open cluster ⊕ Planetary nebula ☄ Quasar △ Radio source × X-ray source ○ Other object 	<p><i>Caldwell 80 - NGC 5139</i> Type of object: Globular cluster Magnitude: 3.7 Size: 36.3' Right ascension: 13h 26m 54s Declination: -47° 29' 40" Constellation: Centaurus</p>
---	---	--

Local Time: 19:40:11 12-Sep-2002
 Location: 53° 27' 0" N 2° 31' 0" W

UTC: 19:40:11 12-Sep-2002
 RA: 13h26m54s Dec: -47° 29' Field: 45.0°

Sidereal Time: 18:56:39
 Julian Day: 2452530.3196