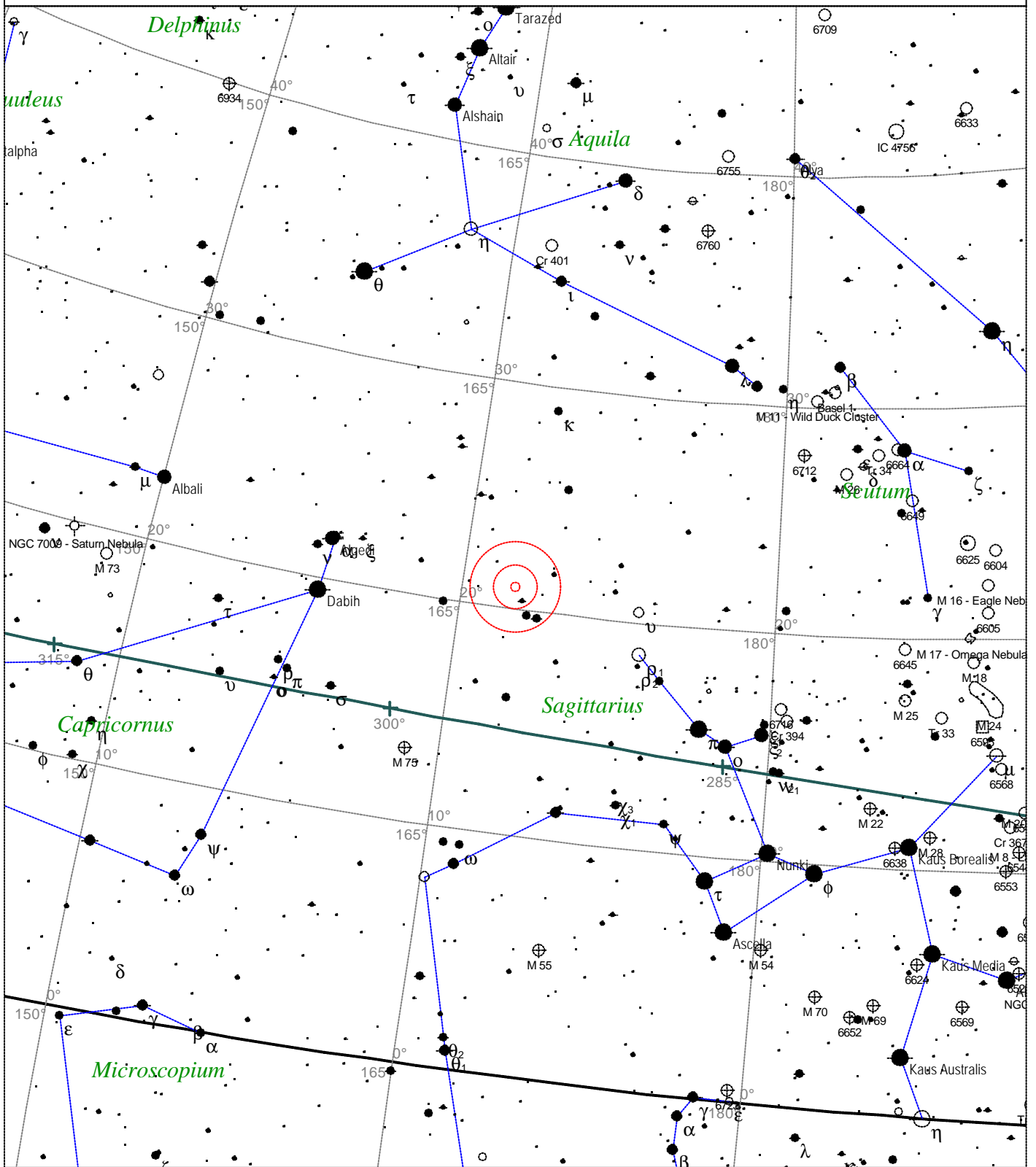


Caldwell 57 - Barnard's Galaxy



<p>STARS</p> <ul style="list-style-type: none"> ● <3 ● 3.5 ● 4 ● 4.5 ● 5 ● 5.5 	<p>SYMBOLS</p> <ul style="list-style-type: none"> ● Multiple star ○ Variable star ☄ Comet ☾ Galaxy □ Bright nebula □ Dark nebula ⊕ Globular cluster ○ Open cluster ⊕ Planetary nebula ☄ Quasar △ Radio source × X-ray source ○ Other object 	<p>Caldwell 57 - NGC 6822 Popular name: Barnard's Galaxy Type of object: Galaxy Magnitude: 9.3 Surface brightness: 15.0 mag/sq arcmin Size: 15.4'x14.2' Position angle: 5° Right ascension: 19h 45m 5s</p>
--	---	---

Local Time: 19:40:11 12-Sep-2002	UTC: 19:40:11 12-Sep-2002	Sidereal Time: 18:56:39
Location: 53° 27' 0" N 2° 31' 0" W	RA: 19h45m05s Dec: -14° 48' Field: 45.0°	Julian Day: 2452530.3196